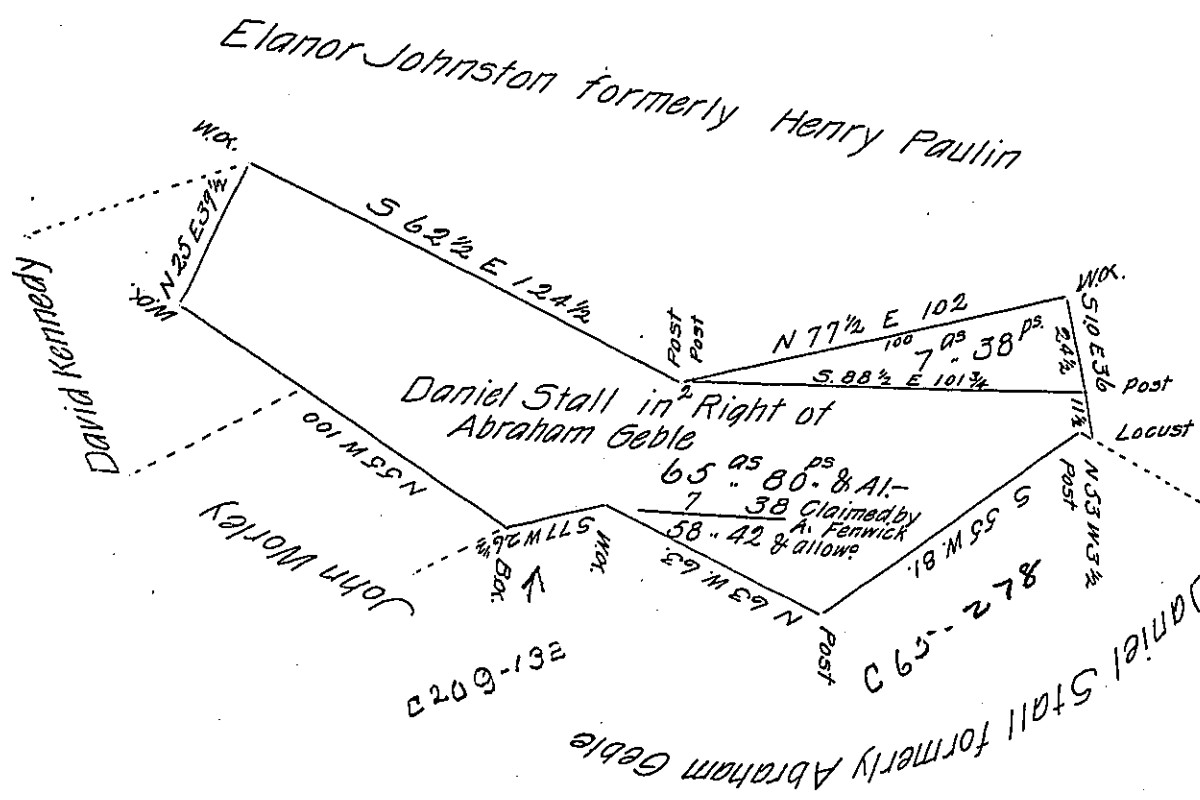


B-14-232



A Draught of a Tract of Land Situate in Antrim Township Franklin (formerly Cum-
berland.) County Containing Sixty five acres and eighty purchases and the usual All-
owance of Six per Cent for Roads & c. Surveyed September 10th 1812 in pursu-
ance of a Warrant granted Abraham Geble Dated June 6th 1754.

N.B. The 7^{as} 38^{pr} & Allowe as above represented is claimed by Albin Fenwick
on his Warrant dated November 6th 1809.

To Andrew Porter Esq.

Thomas Poe D.S.

Surveyor General of Penn^a.

IN TESTIMONY that the above is a copy of the original remaining on file in
the Department of Internal Affairs of Pennsylvania, made
conformably to an Act of Assembly approved the 16th day of
February, 1833, I have hereunto set my Hand and caused
the Seal of said Department to be affixed at Harrisburg,
this twenty ninth day of October 1904.

James R. Brown
Secretary of Internal Affairs.